

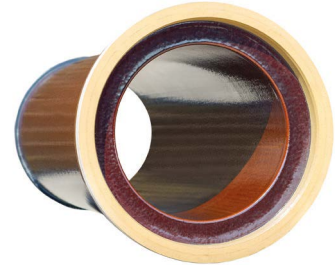
KERA.BASE – NORMALE BELASTING | Buizen



KERA.Base buis/L-dichting



KERA.Base buis/K-dichting



KERA.Base buis/S-dichting

KERA.BASE BUIZEN | NORMALE BELASTING

Nominal diameter	Dichting	Verbindings- systeem	Diameter van de buis		Diameter van de mof		Buislengte l_1	Gewicht	Kruindruk weerstand	Sterkte- klasse
			binnen d_1	buiten d_3	binnen d_4	buiten d_5				
DN			mm	mm	mm	max. mm	cm	kg/st.	FN kN/m	
100	L	F	100 ± 4,0	131 ± 1,5	–	200	125	18	34	34
125	L	F	126 ± 4,0	159 ± 2,0	–	230	125	24	34	34
150	L	F	151 ± 5,0	186 ± 2,0	–	260	100	24	34	34
150	L	F	151 ± 5,0	186 ± 2,0	–	260	150	36	34	34
200	L	F	200 ± 5,0	242 ± 3,0	–	340	100	38	32	160
200	L	F	200 ± 5,0	242 ± 3,0	–	340	150	54	32	160
200	S	C	200 ± 5,0	242 ± 5,0	260 ± 0,5	340	250	92	40	200
250	K	C	250 ± 6,0	299 ± 6,0	317,5 ± 0,5	400	250	132	40	160
250	S	C	250 ± 6,0	299 ± 6,0	317,5 ± 0,5	400	250	132	40	160
300	K	C	300 ± 7,0	355 ± 7,0	371,5 ± 0,5	470	250	181	48	160
300	S	C	300 ± 7,0	355 ± 7,0	371,5 ± 0,5	470	250	181	48	160
350	K	C	348 ± 7,0	417 ± 7,0	433,5 ± 0,5	525	250	253	56	160
400	K	C	398 ± 8,0	486 ± 8,0	507,5 ± 0,5	620	250	350	64	160
400	S	C	398 ± 8,0	486 ± 8,0	507,5 ± 0,5	620	250	350	64	160
500	K	C	496 ± 9,0	581 ± 9,0	605 ± 0,5	730	250	435	60	120
500	S	C	496 ± 9,0	581 ± 9,0	605 ± 0,5	730	250	435	60	120
600	K	C	597 ± 12,0	687 ± 12,0	720 ± 0,5	860	250	575	57	95
600	S	C	597 ± 12,0	687 ± 12,0	720 ± 0,5	860	250	575	57	95

Andere buislengten zijn op aanvraag verkrijgbaar.